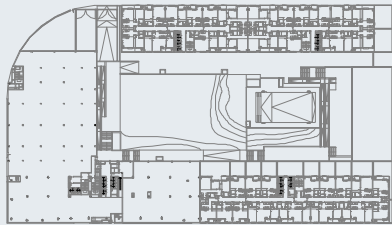


AMENABAR

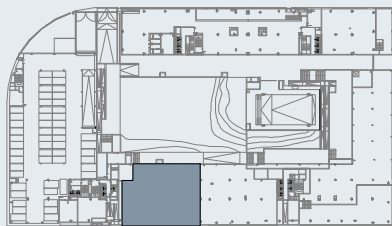
JARDINES DE VALDEBEBAS - MADRID -

LOCAL 3

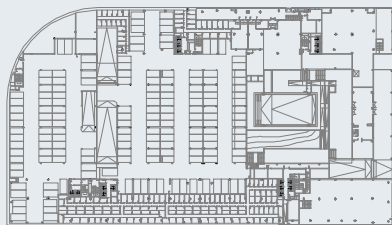
TOTAL CONSTRUIDA TOTAL: 554,83 m²



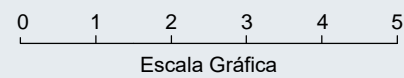
PLANTA 1ª (P1, P3 Y P4) - BAJA (P2).



PLANTA SÓTANO 1 - BAJA.



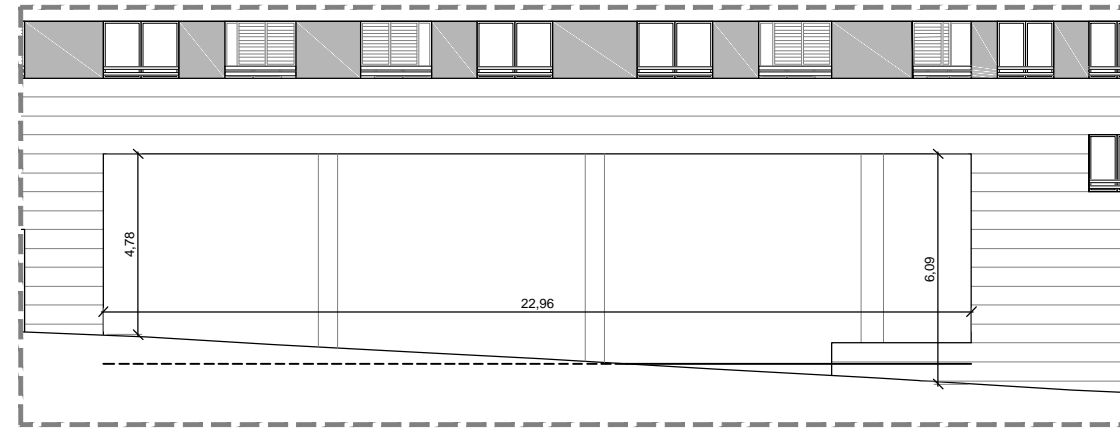
PLANTA SÓTANO 2 - BAJA.



Escala Gráfica

SOBRECARGA DE USO: 10 KN/m² (1.000 kg/m²)

ZONA CON DESCUELGUE DE
INSTALACIONES



ALZADO AVENIDA JUAN ANTONIO SAMARANCH

