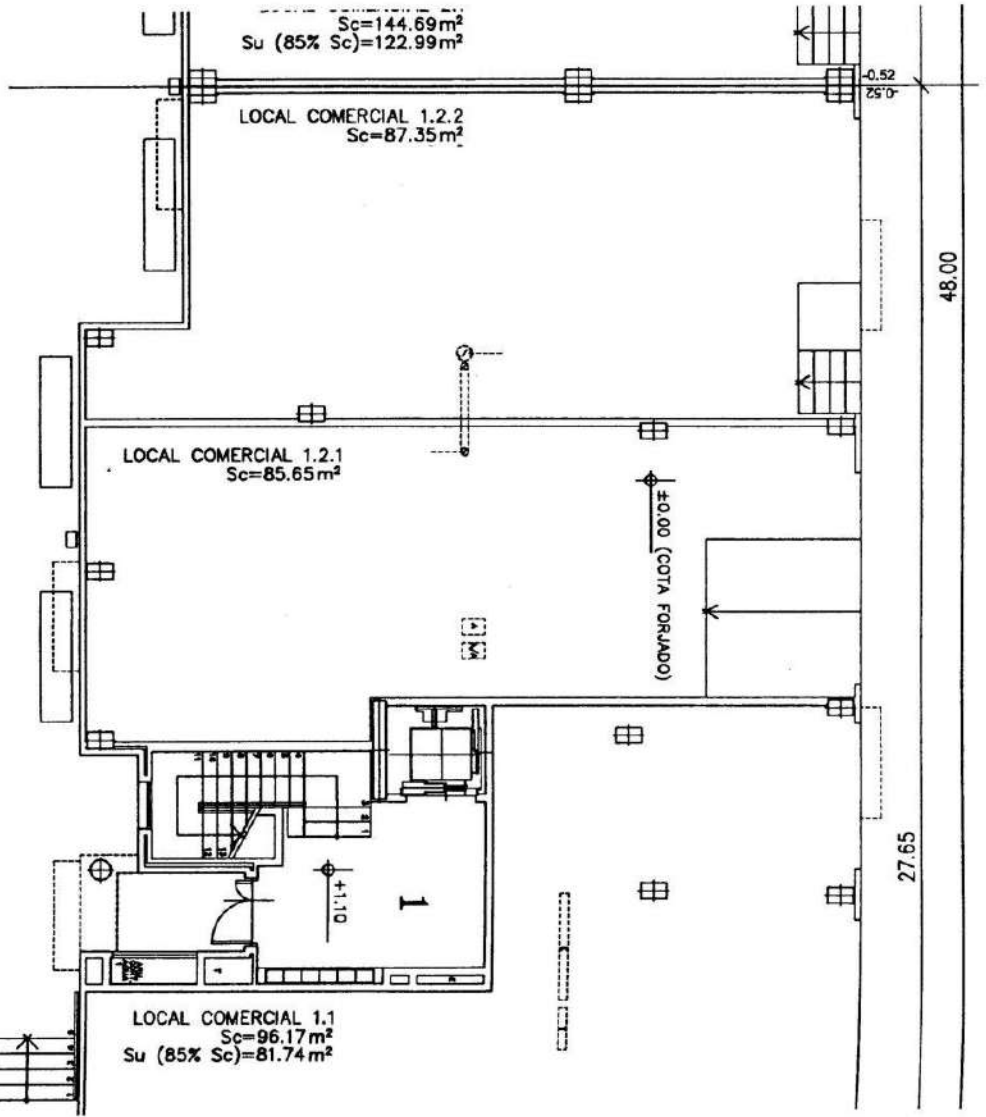


+1.10



Sc=144.69m²
Su (85% Sc)=122.99m²

LOCAL COMERCIAL 1.2.2
Sc=87.35m²

LOCAL COMERCIAL 1.2.1
Sc=85.65m²

+0.00 (COTA FORJADO)

+1.10

LOCAL COMERCIAL 1.1
Sc=96.17m²
Su (85% Sc)=81.74m²

48.00

27.65

0.52