

Getafe – Polígono de los Olivos

Oportunidad – Naves Logísticas

I – Operación

II – Ubicación

III – Vista Satélite

IV – Comunicaciones

V – Planos

VI – Secciones

El Proyecto

El proyecto incluye una reparcelación de tres parcelas, para desarrollar un conjunto de dos naves logísticas en el Polígono de los Olivos, en Getafe. El activo beneficia de una excelente ubicación, a solamente 13 km de Madrid Centro, con un acceso directo a la A-4 : ideal para una nave tipo last miles.

Cifras Clave

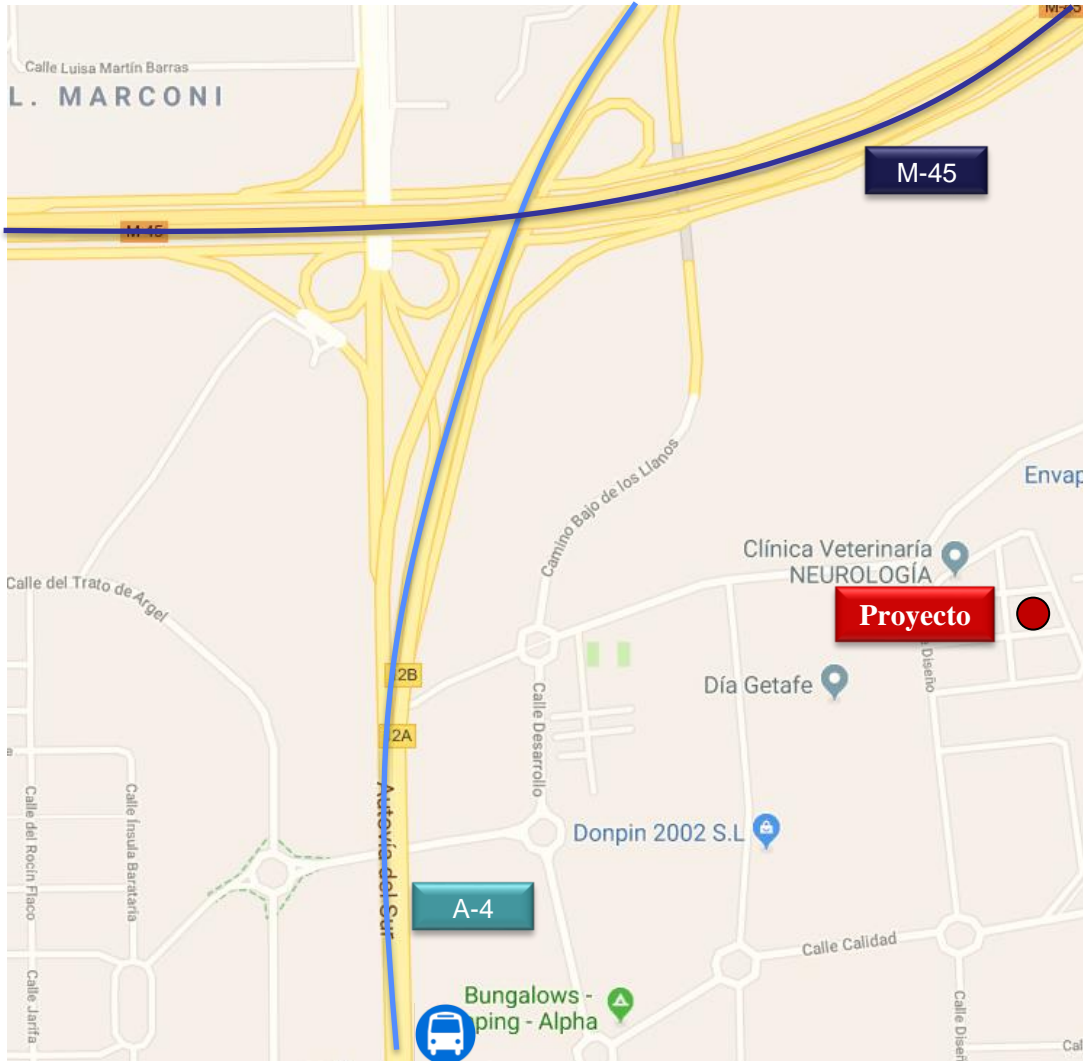
Superficie Parcela:	9.300 m ²
Altura Máxima :	15 m
Plazas de Aparcamiento:	60 plazas
Total Superficie Construida:	5.604 m ²



Ubicación





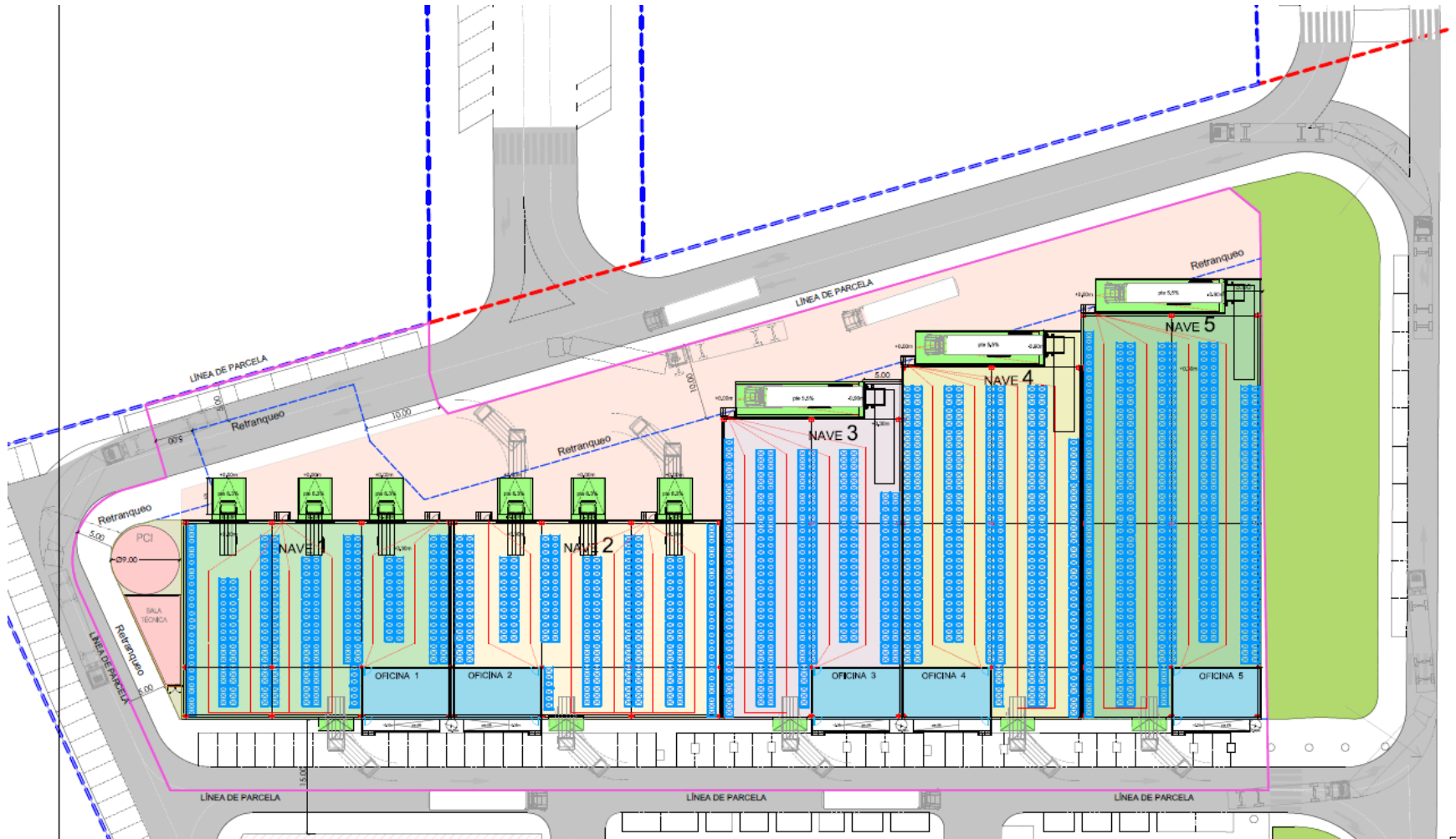


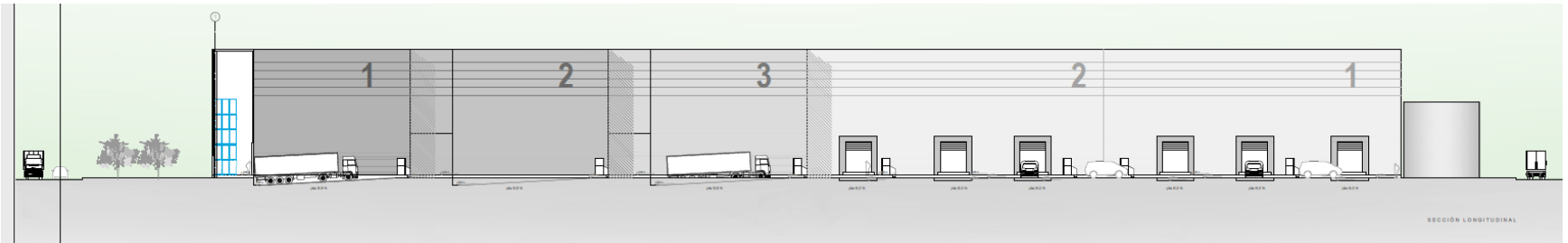
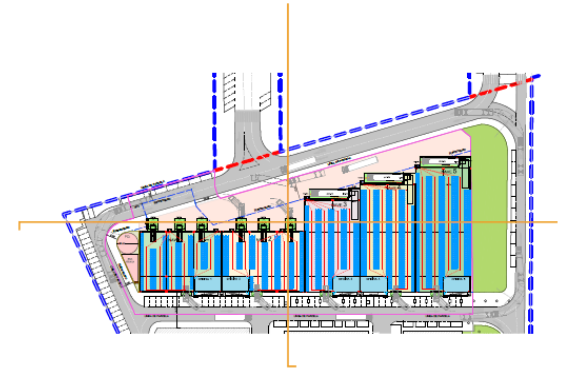
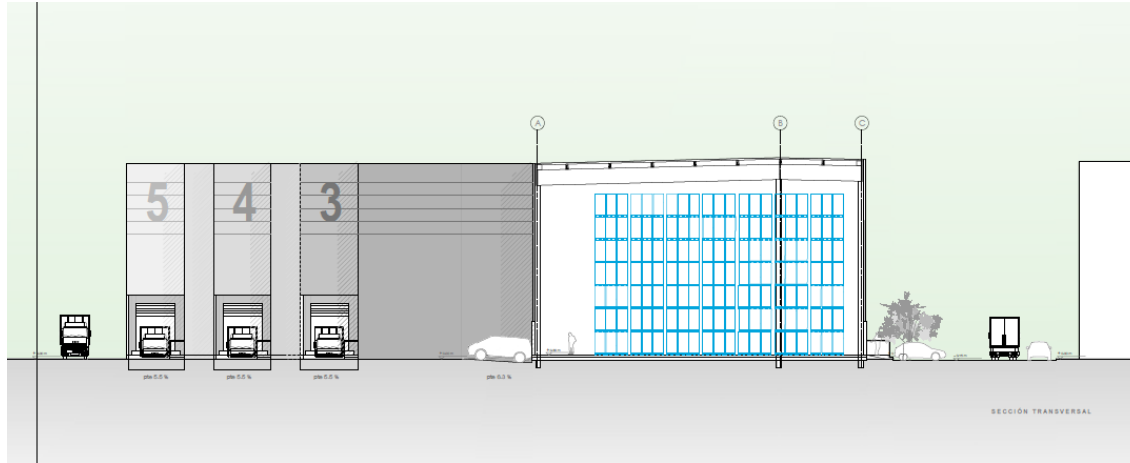
A-4: Madrid – Sevilla Autopista
Acceso directo en coche desde el edificio

M-45 : Conecta las naves con los suburbios de Madrid
Acceso directo en coche desde el edificio



Línea de Bus 447 : Legazpi – Getafe Hospital
Conecta Getafe a Madrid
A 1 km de las naves





This confidential document has been prepared by Therus Invest based on the information of the asset proposed as a potential sale transaction or joint collaboration.

By accepting the present document, the intended recipient agrees not to copy, reproduce and distribute to third parties this confidential document, in whole or in part, without the prior written permission of Therus Invest; and also to keep as confidential the whole information contained within this dossier that it is not of public knowledge and to use it for the purposes specified below.

The present confidential document has been developed to provide general information of the asset and also the urban planning that affects it. While the information contained herein is considered to reflect the true image of the building, Therus Invest expressly disclaim all liability for any statements, express or implied, contained herein, omissions or any other written or oral communications made to any interested party.

All recipients of the present document should base their asset analysis solely on recipient's own reviews and business analysis. This information is only provided as a guide and cannot form part or the whole of a contract.